



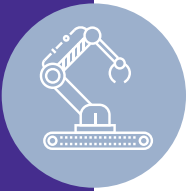
Xello

Connecting Today's Businesses with Tomorrow's Talent



WHY WORK-BASED LEARNING?

Students are more successful in the workforce when they have the opportunity to explore their interests and skills early on in life. By partnering with us, you can help today's students gain exposure to careers, develop employability skills and build tomorrow's talent pool through Work-Based Learning (WBL).



- **EXPOSURE:** WBL programs help expose students to career pathways and provide real-world opportunities to help them develop skills for the workforce.
- **KNOWLEDGE:** Our students are already engaged in career exploration using an online program called Xello – this program helps students build self-knowledge, explore career options and build personalized plans for future success.
- **EXPERIENCE:** As a WBL partner, you will have a company profile created for you in Xello, so students can learn more about your company and the work-based learning opportunities you offer.



WHAT OTHERS ARE SAYING

"The Xello career development tools and programs used by Bay-Arenac ISD are best-in-class. Their programs help students identify their personal interests and strengths which is integral to building a long and fulfilling career. Michigan Sugar Company volunteers are happy to provide students with real-world feedback on a variety of potential career choices. Michigan Sugar Company hopes that our involvement encourages local students to build their careers near home and to contribute to our local communities throughout their careers."
~ Michigan Sugar Company



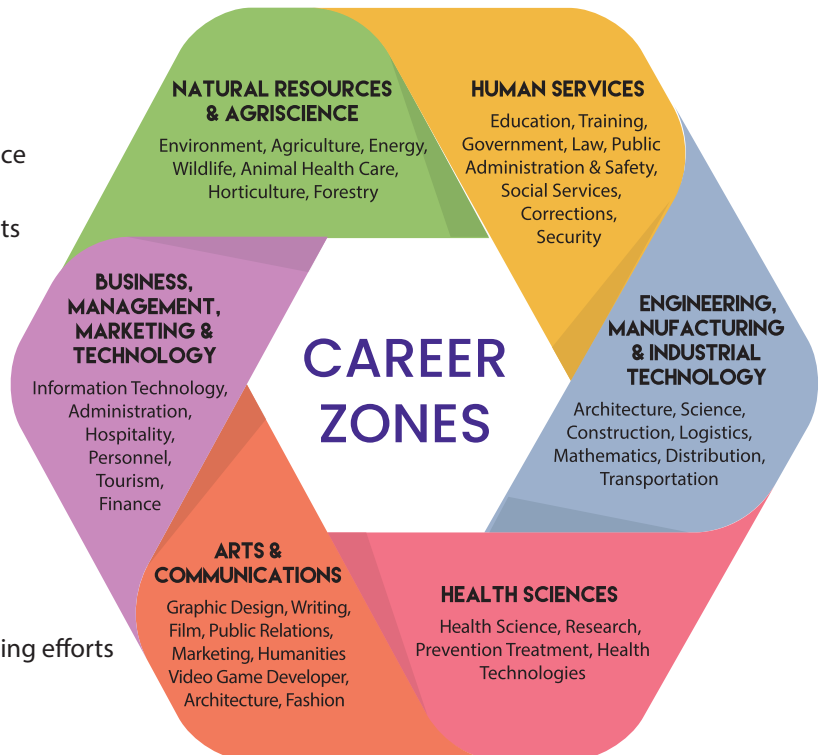
BENEFITS TO TEENS

- The ability to practice soft skills
- Building work ethic
- Improvement in academic performance
- Increase career awareness
- Explore and experience career interests



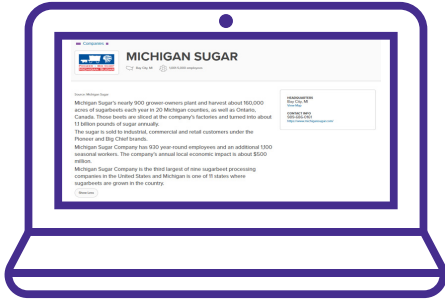
BENEFITS TO EMPLOYERS

- Fresh perspectives
- Innovative ideas
- Increased productivity
- Workforce development and fueling the talent pipeline
- Increased awareness, applicants and retention
- Cost savings on recruitment and training efforts



WHY XELLO?

People are more successful when they have the opportunity to explore their interests and skills early on in life. By partnering with K-12 educators in your community, you can help today's students gain exposure to careers, develop employability skills and build tomorrow's talent pool around skills you need.



HOW IT WORKS

Students in your community are already using an online program called Xello to build self-knowledge, explore post-secondary options, and develop plans for their future.

As a program partner, you can connect directly with K-12 educators and students by creating a profile, sharing your expertise, and offering work-based learning experiences.

PROMOTE YOUR ORGANIZATION

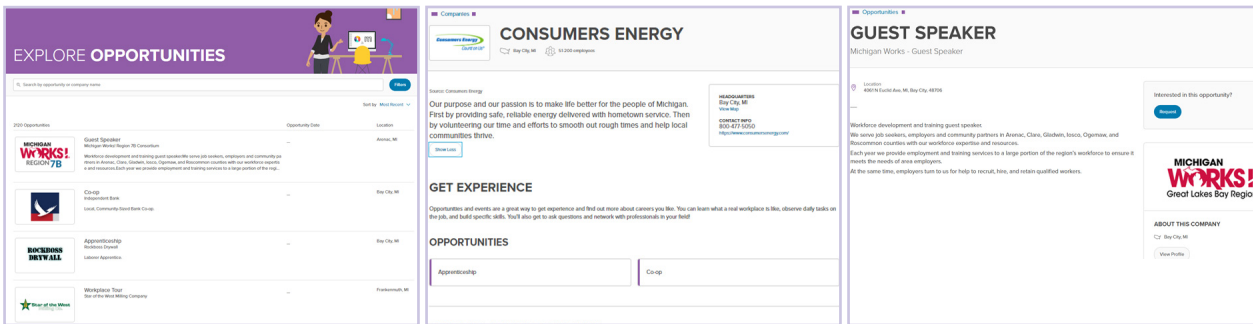
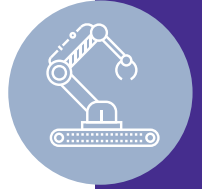
Increase your organization's visibility and help students discover the career paths you support with a modern and engaging profile.

OFFER WORK-BASED LEARNING OPPORTUNITIES

Expose students to in-demand occupations and help bridge the skills gap by offering real-world experiences and hands-on training. WBL can also be offered virtually.

SHARE YOUR EXPERTISE

Connect with students looking to learn more about your organization or industry, and support their career exploration efforts by sharing your experiences. This can be as simple as offering a company tour once a year.



SIGN UP TODAY!

NEXT STEPS & CONTACTS

For more information about this program and to sign up, scan the QR code. If you would like to learn more and connect your company to Xello, your contacts at Bay-Arenac ISD are:

- **Renee Courier Aumock:** aumockr@baisd.net
- **Michelle Elliott:** elliottm@baisd.net



The District Board of Education complies with all federal, state and local statutes and laws prohibiting discrimination and retaliation and expressly prohibits unlawful discrimination or unlawful retaliation in any form. Specifically, Bay-Arenac ISD provides equal employment opportunity and treatment regardless of race, religion, color, gender, age, national origin, disability, height, weight, or any other orientation status protected by federal, state or local law.